



---

B R O D M A N N

---



[BrodmannPianoUSA.com](http://BrodmannPianoUSA.com)

V I E N N A • L O N D O N • H O N G K O N G • U S A



**Brodmann Grand Piano**  
owned by Carl Maria von Weber  
Musical Instrument Collection, Berlin



**Ludwig v. Beethoven**  
owner of a Brodmann piano, miniature on ivory  
by Christian Hornemann 1803



**Pedal Hammer Grand Piano Joseph Brodmann**  
approx. 1815, rosewood, with egyptian hermheads and bronzefittings, Musical  
Instrument Collection, Vienna Arts Museum (Kunsthistorisches Museum Wien)



**Carl Maria von Weber**  
bought a Hammerflügel from  
Joseph Brodmann in 1813

## BRODMANN PIANO

**1828** was an important year in the history of piano making in central Europe. Ignaz Bösendorfer, the most famous of all Austrian piano builders took control of the Joseph Brodmann piano workshops which was then considered to be the most innovative and modern piano factory in Europe and therefore the world.

Joseph Brodmann was born in 1763 in Deuna in Eichsfeld, Prussia (today Sachsen-Anhalt / Germany). As a young man, he came to Vienna and became the apprentice of the well known piano builder Frederick Hoffmann.



Brodmann's birth place, Deuna im Eichsfeld

By this time, Vienna had already been established as the center of the musical world influenced by the music of Mozart, Beethoven and Schubert who all lived during his lifetime. Joseph Brodmann was one of the first and best known piano designer and craftsman of his time. In 1800, in the lexicon of musicians he was listed as "Joseph Brodmann - instrument maker, excelled in constructing horizontal fortepianos of solid finish". In 1805 he was registered in the Court and State record department as an organ and piano maker.

His contribution to inventions for piano design and piano making laid the groundwork for his most talented apprentice, Ignaz Bösendorfer, whose pianos are still considered today by many as the finest pianos in the world. Joseph Brodmann was best known for his development work on piano soundboards. He is credited with greatly improving the necessary stiffness of the soundboard, so needed to

withstand the increased string tensions demanded by the pianists of the day and therefore preventing the soundboard from tearing or splitting.

World famous musicians, composers and conductors, such as Ludwig v. Beethoven owned a Brodmann piano. Moreover Beethoven used to play with Julie, the wife of his childhood friend Stephan von Breuning on this Brodmann, as documented in the 1870s by Stephan's son, Gerhard.

Also Carl Maria Friedrich Ernest von Weber purchased and endorsed Brodmann's pianos. In a letter to his brother Weber euphorically praised his new Brodmann piano indicating it was the best piano he had ever played. Weber composed a number of well known compositions on his instrument, amongst which are the operas Euryanthe and Oberon, 2 symphonies and 2 piano concertos. Brodmann's innovations in cabinet design made his instruments sought after not only by musicians, but also Vienna's high society at the time. Examples of Brodmann pianos are still in working order in the piano collections of the Vienna Arts and Berlin Museums today. One of these pianos built in 1815, has a completely hand carved case with bronze fittings.

Joseph Brodmann's original address in Vienna was at no 43 Glacis, Josefstadt (8th district), later 226 Johannes Street, which is called today Lenau Street 10, where he also had his workshops.

Ignaz Bösendorfer studied in the workshop of Joseph Brodmann from the age of 19 years, where he finished his apprenticeship.

A great master found an ingenious pupil who took everything Joseph Brodmann had taught him and began to produce from 1828 the world famous Bösendorfer piano when he took over Joseph Brodmann's workshops.

There are still early examples of Bösendorfer pianos today which state on the nameboard "Ignaz Bösendorfer pupil of Joseph Brodmann" and "Ignaz Bösendorfer made in the workshops of Joseph Brodmann".





# BRODMANN IS MUSIC

Many values change over the years. The value of music, however, renews with each generation. Music reaches the very depth of our being with an inspiring, sensual influence on our awareness of life. Living with music means living with passion, beauty, and style. It means listening with Brodmann.

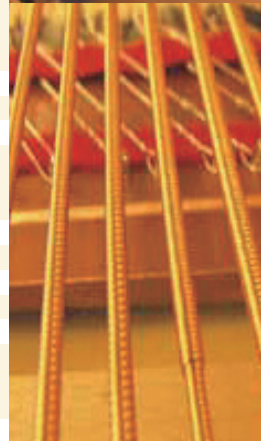
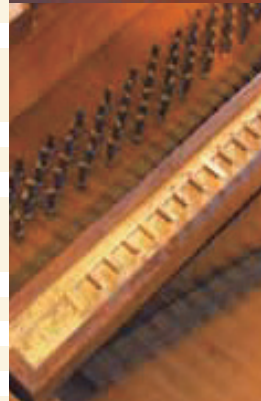
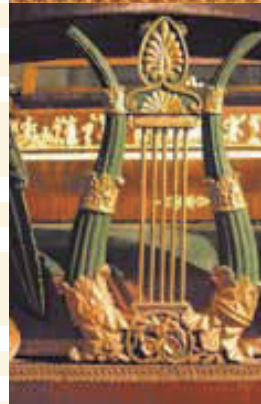
Every instrument we produce is a direct reflection of our passion for music.

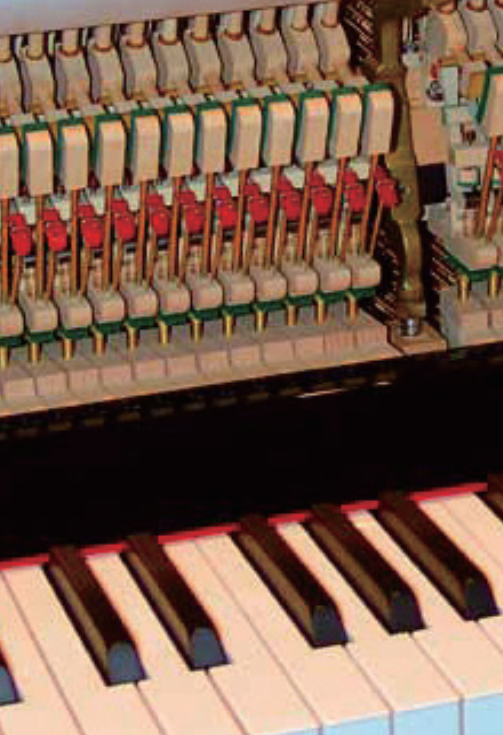
Many of us at Brodmann are active musicians ourselves. We take great pride in tirelessly researching new technologies and procedures to improve our products, which we consider our works art of piano engineering. As such, we hold ourselves to a high standard of aural aesthetics – one formed by a rich Viennese musical history that has decisively influenced European sound tradition.

The care taken in every step of production is part of Brodmann's commitment to having a place in that history. Voicing and tuning is still done expertly and painstakingly by ear. Even the smallest screw is handdrilled to specifications that ensure it does its job as part of the resonating instrument. We place our trust exclusively in sourcing high-quality European materials from proven vendors.

Our pianos have an essential common element: the distinctive and highly valued Brodmann sound, which is both dynamic and natural. Beautiful in performance and appearance, they are destined to be the classics of tomorrow.

We invite you to listen to our pianos if you love music as we do. The sound you'll hear from our Brodmann instruments just might make you fall in love all over again.





## BRODMANN CONSERVATORY EDITION (CE SERIES)

The Brodmann Conservatory Edition was designed for the beginning student or the aspiring pianist who wants a great instrument. The CE series is a more affordable option to begin your journey in experiencing Brodmann pianos.

Without compromising Brodmann's integrity, Brodmann utilizes hammers made of natural wool felt molded on North American maple, German Röslau strings and Premium Alaskan Sitka spruce soundboard and ribs, delivering a deliberate touch and rich tone.

The Brodmann CE series is comprised of the model CE 118 which is a 46" upright, the model CE 148 which is a 4' 10" baby grand and finally the CE 175 which is a 5' 9" grand piano. All three models are available in High Polish Ebony.

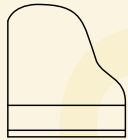




## MODEL CE 175

The Brodmann CE 175 fulfills the needs of any home or smaller institution that needs a full bodied sound within budget. With precise musical specifications in mind, this model has been designed to satisfy even the most discriminating player.

- Brodmann Viennese Scale Design
- Soundboard: Solid Alaskan Sitka Spruce
- Ribs: Alaskan Sitka Spruce
- Foundry sand cast plate
- Strings: Röslau
- Hammers: Ambic natural wool under felt with Wurzen natural wool  
hammer felt molded on North American Maple
- Key frame: European Spruce and Beech
- Scaling: Duplex scale
- Fallboard: Slow close system
- Bench included.
- Available in: Ebony polish



88 keys

L: 175 cm / 5' 9"

H: 101 cm / 40"

W: 151 cm / 4' 11"

Net: 313 Kgs. / 690 Lbs.

Gross: 333 Kgs. / 734 Lbs.

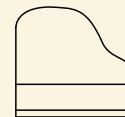


# CONSERVATORY EDITION

## MODEL CE 148

The Brodmann CE 148 was fashioned for the home. Even though this is a small baby grand, it performs like a much larger piano. The touch and tone of this model is crafted for the beginner and yet it will hold up to the demands of an advanced player. This cost effective model makes it easy to have a baby grand piano in your home.

- Brodmann Viennese Scale Design
- Soundboard: Solid Alaskan Sitka Spruce
- Ribs: Alaskan Sitka Spruce
- Foundry sand cast plate
- Strings: Röslau
- Hammers: Ambic natural wool felt molded on North American maple
- Keyframe: European Spruce and Beech
- Scaling: Duplex scale
- Fallboard: Slow close system
- Bench included.
- Available in: Ebony polish



7 ¼ octave (88 keys)

L : 148 cm / 4' 10"

H: 101 cm / 40"

W : 150 cm / 59"

Net: 263 Kgs. / 580 Lbs.

Gross: 283 Kgs. / 624 Lbs.



## MODEL CE 118

The Brodmann CE 118 is the only upright in the Conservatory Edition. It is the most affordable upright on the market with optimal specifications. The top-tier materials and construction of this model makes it the best upright in its category.

Brodmann Viennese Scale Design

88 keys

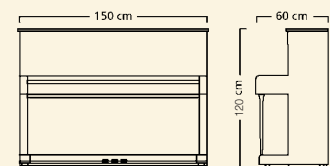
H: 118 cm / 46"

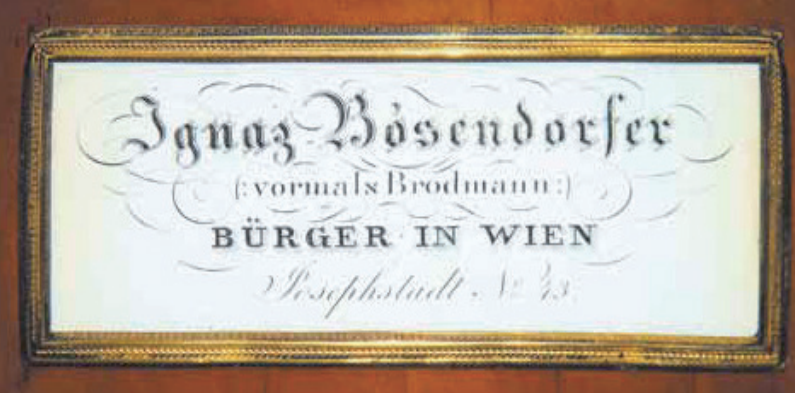
W: 150 cm / 59"

D: 60 cm / 24"

Net: 210 Kgs. / 463 Lbs.

Gross: 230 Kgs. / 507 Lbs.





## REDISCOVER THE PLEASURE

Proud owners of Brodmann pianos give many reasons for selecting our instruments. A full singing sustaining rich tone, a responsive touch, a classical timeless design and a confidence in the knowledge they have invested in a piano from a company that has carefully selected its Brodmann dealers to provide the best advice and after-care services following the purchase of their piano. Brodmann pianos are only available from exclusively authorized Brodmann dealers.

Long term studies in education have proven that children who actively learn and play music have better social skills, are better at languages and maths and they develop more life-skills through this training than those who do not associate with music at all. "Music makes kids smarter" is a statement which rings true and the Brodmann Company fully endorses.

We at Brodmann Piano truly believe in our company's motto which is to 'Rediscover the Pleasure'. This saying is an invitation to rediscover the joy of making music with Brodmann pianos showing it can be both rewarding and creative as well as being fun.

Our mission is to make the purchase of a high quality instrument whether at the entry level, the professional level or the Artists performance level, affordable for everyone and to ensure your Brodmann piano becomes your partner for life.

## BRODMANN PROFESSIONAL EDITION (PE SERIES)

The Brodmann Professional Edition or PE Series is notable as a leading piano for those with discerning tastes in pianos.

This series is recognized worldwide as one of the best designed pianos in its category.

The intense tone palate sparkles with color and the touch will give you the feeling that you are playing a piano many times its value.

The Brodmann PE series grands are comprised of the PE 150 which is a 5' baby grand, the PE 162 which is a 5' 4" grand, the model PE 187 which is a 6' 2" grand, the PE 212 which is a 7' grand and the PE 228 which is the 7' 6" Semi-Concert grand.

The Brodmann PE series uprights start with the PE 121 at 48" tall and finally the PE 130 at 52" tall. Most of these models are available in a variety of colors.

### Grand Models:

PE 150, PE 162, PE 187, PE 212, PE 228

### Upright Models:

PE 121, PE 130





## MODEL PE 228

The Brodmann PE 228 is said to be THE finest Semi-Concert grand in this category available today. The Brodmann Viennese Scale Design is really on display as it demonstrates the power of perfection. When you play this piano, you can literally hear the dazzling sounds come to life. The PE 228 demonstrates what happens when Brodmann creates a piano with the very finest materials and the best scale design.



88 keys  
L : 228 cm / 7' 6"  
H: 101 cm / 40"  
W : 159 cm / 5' 3"  
Net: 419 Kgs. / 923 Lbs.  
Gross: 439 Kgs. / 967 Lbs.

- Ideal performance instrument for institutions and professional
- Outstanding balanced touch
- Superb tonal range
- Hand finished
- Brodmann action designed by Langer UK
- Slow close fallboard system
- Solid Alaskan Sitka spruce keyboard
- Solid ebony sharp key tops
- Selected top quality European components including:

German top quality European solid spruce soundboard by Strunz

Alaskan Sitka spruce ribs

German hammers by Abel

German Klinke agraffes

- Supplied with adjustable concert bench





## MODEL PE 212

The Brodmann PE 212 is a prime example of the finest Viennese scale design in its price category in the piano industry. By combining Joseph Brodmann's innovations with present-day technology, Brodmann has created an unrivaled grand piano. The specifications of this model make it the leading choice for any situation that calls for a larger grand piano.

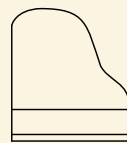


88 keys  
L : 212 cm / 7'  
H: 101 cm / 40"  
W : 159 cm / 5' 3"  
Net: 408 Kgs. / 899 Lbs.  
Gross: 428 Kgs. / 943 Lbs.



## MODEL PE 187

The Brodmann PE 187 is one of the most popular model in the Brodmann family of grand pianos. The features that separate this 6' 2" grand are the precision of the touch and clarity of the sound. The scale design uses the same components as Brodmann pianos that are many times the price. Using predominantly German components and hand assembly, the sound and touch are nothing short of perfection.



88 keys  
L : 187 cm / 6' 2"  
H: 101 cm / 40"  
W : 154 cm / 5' 1"  
Net: 320 Kgs. / 705 Lbs.  
Gross: 340 Kgs. / 749 Lbs.



## FEATURES OF PE 212 AND PE 187

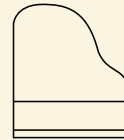
- Ideal performance instruments for Institutions and Professionals
- Outstanding balanced touch
- Superb tonal range
- Hand finished
- Brodmann action designed by Langer UK
- Slow Close fallboard system
- Solid Alaskan Sitka Spruce keyboard
- Solid ebony sharp key tops
- Selected top quality European components including:
  - German top quality European solid spruce soundboard by Strunz
  - Alaskan Sitka spruce ribs
  - German hammers by Abel
  - German strings by Röslau
  - German pin block by Dehonit
  - German Klinke Agraffes
- Supplied with adjustable concert bench

# PROFESSIONAL EDITION



## MODEL PE 162

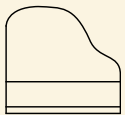
The Brodmann PE 162 is designed for the home or venue that requires a powerful projection and a balanced touch. The PE 162 fits the bill for an exemplary performance in a 5' 4" piano. The best features starts with the sound, which has been aptly described as Viennese. The tone is very sweet with lots of color. The PE 162's touch is unparalleled in its perfect down weight and balanced up weight, making it perfect for the beginner or the advanced performer. This is a model that you will truly have to experience to appreciate.



88 keys  
L : 162 cm / 5' 4"  
H: 101 cm / 40"  
W : 151 cm / 4' 11"  
Net: 290 Kgs. / 639 Lbs.  
Gross: 310 Kgs. / 683 Lbs.

## MODEL PE 150

The Brodmann PE 150 is the smallest of the Brodmann grand pianos. This baby grand sounds and feels like a piano many times its size. When you play this model, you feel it has the balance and performance of a concert grand. The astonishing sound that comes out of this piano makes it seem as if the rest of the line was designed around it. If you need a 5 foot grand, there is simply no other choice.



88 keys  
L: 150 cm / 5'  
H: 100 cm / 39"  
W : 151 cm / 4' 11"  
Net: 270 Kgs. / 595 Lbs.  
Gross: 290 Kgs. / 639 Lbs.



## FEATURES OF PE 162 AND PE 150

- Ideal Instruments for home and studio
- Outstanding balanced touch
- Hand finished
- Brodmann action designed by Langer UK
- Slow Close fallboard system
- Solid Alaskan Sitka Spruce keyboard
- Selected top quality European components including:

German top quality European solid spruce  
soundboard by Strunz

Alaskan Sitka spruce ribs

German hammers by Abel

German strings by Röslau

- Supplied with adjustable concert bench



Hand selected Austrian spruce  
from trees hundreds of years old  
grown at a minimum of 100  
meters



The art of tonewood making  
with over 190 years of master  
craftsman experience and know  
how

# PROFESSIONAL EDITION

## CONCERT UPRIGHT PIANO MODEL PE 130

The Brodmann PE 130 is the largest upright piano in the Brodmann family. This upright model is preferred by professional pianist because of its size and power. The PE 130 is the best and most affordable upright piano in its category in regards to its sound and touch. This is, by far, the best 52" piano to be found. The Strunz soundboard and Abel hammers are only a portion of what makes this an upright example of the best Brodmann Piano offers.

88 keys

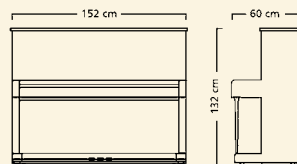
H: 130 cm / 52"

W: 152 cm / 5'

D: 60 cm / 24"

Net: 232 Kgs. / 511 Lbs.

Gross: 252 Kgs. / 555 Lbs.



## MODEL PE 121

The Brodmann PE121 is, by far, one of the most popular upright models. This 48" piano delivers a quality sound like no other in the industry. The PE 121 shows off the European scale design in its sound. The solid spruce soundboard, the Langer action and the Röslau strings together with German Abel hammers make this piano the preferred model of professionals and yet it is priced to accommodate the beginner. For the best of everything in an upright piano today, the PE 121 is the perfect choice.

### FEATURES OF PE 130 AND PE 121

- ideal instruments for Institutions, teaching studio and home
- Outstanding balanced touch
- Hand finished
- Brodmann action designed by Langer UK
- Solid wood keyboard

German top quality European solid spruce soundboard by Strunz for PE 130 and Alaskan Sitka Spruce for PE 121

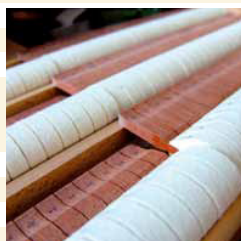
Alaskan Sitka spruce ribs

German hammers by Abel

German strings by Röslau



Undamaged natural structure of wool



Brodmann hammer's a critical component in creating our Viennese, European sound tradition



88 keys

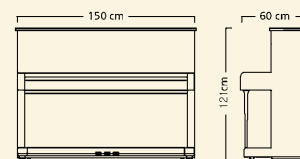
H: 121 cm / 48"

W: 150 cm / 59"

D: 60 cm / 24"

Net: 215 Kgs. / 475 Lbs.

Gross: 235 Kgs. / 519 Lbs.





## MODEL PE 121 ATS

In keeping with the latest European trends, Brodmann is introducing an exquisite new wood panel with accents on our PE 121 series.

The latest trends show a need for a new look and our design team has chosen the Applewood veneer for its contemporary appearance.

This unique wood is hand selected from the finest wood varieties available and is then finished by the best woodworkers available.

Brodmann's European scale design and specifications in the model PE121 remain unchanged in this PE 121 ATS.



88 keys  
H: 121 cm / 48"  
W: 150 cm / 59"  
D: 60 cm / 24"  
Net: 215 Kgs. / 475 Lbs.  
Gross: 235 Kgs. / 519 Lbs.

## NEW BRODMANN PE 126I 49" INSTITUTIONAL MODEL

In a constant effort to fill the needs of our customers, Brodmann has engineered a new model specifically designed for institutions that prefer the sound of Brodmann pianos.

The features that make this model different include the Boston type, slow close fallboard along with the extended music desk for larger scores and songbooks.

With larger casters and toe block, it is more mobile and is perfect for Churches, Colleges and all types of institutional uses.

The European scale design delivers the classic rich tones of Brodmann and the reliability you have come to expect.

- Ideal performance instruments for institutions and professional
- Outstanding balanced touch
- Superb tonal range
- Hand finished
- Slow close fallboard system
- Alaskan Sitka spruce soundboard
- Alaskan Sitka spruce ribs
- Solid Alaskan Sitka spruce keyboard
- Solid ebony sharp key tops
- European beech pin block
- German hammers by Abel
- German Röslau strings
- Supplied with adjustable concert bench



88 keys  
H: 121 cm / 48"  
W: 150 cm / 59"  
D: 60 cm / 24"  
Net: 240 Kgs. / 529 Lbs.  
Gross: 260 Kgs. / 573 Lbs.

# PROFESSIONAL EDITION

## BRODMANN VIENNA SERIES (V SERIES)

Brodmann continues to innovate with the all new Vienna Series.

The ingenuity and creativity of the newest Brodmann pianos have everybody talking.

The V series has a new carbon fiber action.

Carbon fiber action components are light and strong.

State-of-the-art action design is durable and responsive.

The new Carbon Fiber Actions are available in the grand model of PE187IV (6' 2") and three models of uprights. Those models are PE118V (46", 463 Lbs.), PE124V (48", 475 Lbs.) and the PE132V (52", 511 Lbs.).



**PE-118V, PE-124V & PE-132V  
in Ebony Polish**



**PE-124V in Bubinga Polish**



**CARBON FIBER ACTION**

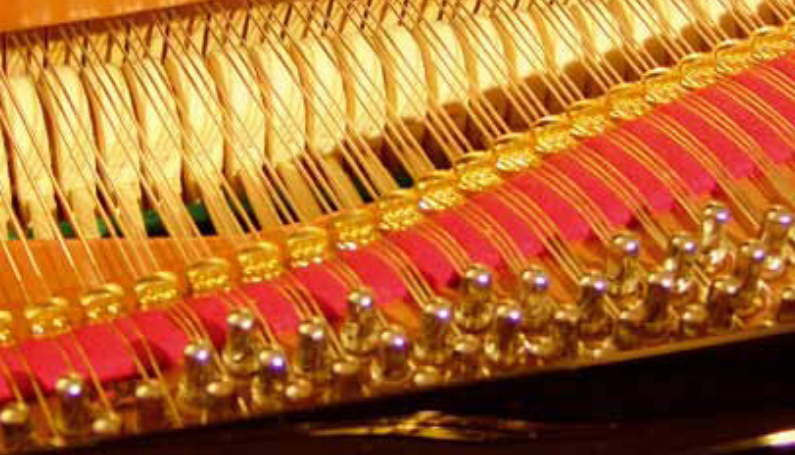
## FEATURES OF PE 118V, 124V, 132V & 187IV

- German top quality European spruce soundboard by Strunz
- Alaskan Sitka spruce ribs
- Bridge made of North American Maple with German Beech
- Brass Agraffe on PE 124V & PE 132V
- German Dehonit pin block
- Carbon Steel tuning pins
- Röslau Strings
- Natural wool felt
- Solid Alaskan Sitka spruce keys with Ebony wood sharps
- European Spruce and Beech Key Frame
- Renner hammer with natural wool felt on hornbeam molding
- Slow-Close
- Shift/Sostenuto/Sustain pedals



**PE-187IV in Ebony Polish**





## SOUND PHILOSOPHY

The name of Joseph Brodmann, the famous Viennese piano maker, stands for more than just a product name. The sound philosophy of Joseph Brodmann pianos is based on the Viennese, European sound tradition.

More and more people today are turning away from the bright harsh sounding pianos which have become the accepted tonal sound of pianos produced for the past 25 years. People are returning to the traditional sweet rounded tones that was the original signature of fine world class pianos from Europe.

The secret of the Brodmann pianos is that they are a European designed piano, using European parts in the key areas of sound production, i.e. soundboards, hammers and strings. The inclusion of these critical components makes all the difference in creating the Brodmann piano sound, a distinctive full and rounded European tone, giving a much sweeter, singing sustaining tone than that of our competitors. In addition, Brodmann also works together with renowned piano performers, composers and artists to ensure the finest tonal palette and sound quality for all our instruments.

## WARRANTY

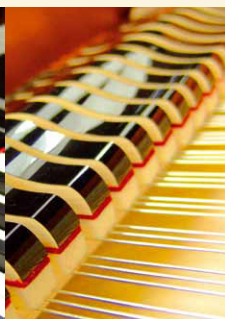
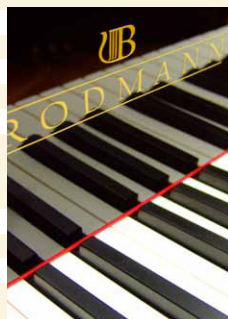
Brodmann Piano is proud of the quality of its grand and upright pianos.

We therefore offer a standard warranty on parts and labor on all Brodmann pianos.

The pianos are carefully prepared for your enjoyment before the piano is delivered to your home.

Please make sure your piano is well cared for with general maintenance; tuning, voicing, regulation, cleaning, temperature and humidity control and other important conditions recommended by your Brodmann dealers.

Please read the warranty card carefully and do not forget to register your piano with Brodmann Piano.







**BrodmannPianoUSA.Com**  
**Sales Office**  
3227 Natoma Way  
Orlando, FL 32825  
Tel: 954-559-9553  
E-mail: [Scott@BrodmannPianoUSA.com](mailto:Scott@BrodmannPianoUSA.com)  
[www.BrodmannPianoUSA.com](http://www.BrodmannPianoUSA.com)

**BrodmannPianoUsa.Com**  
**Corporate Office**  
Piano Marketing Group Inc.  
1447 Montgomery St  
Tustin, CA 92782  
Tel: 949-600-1476  
E-mail: [Peterh@BrodmannPianoUSA.com](mailto:Peterh@BrodmannPianoUSA.com)  
[www.BrodmannPianoUSA.com](http://www.BrodmannPianoUSA.com)